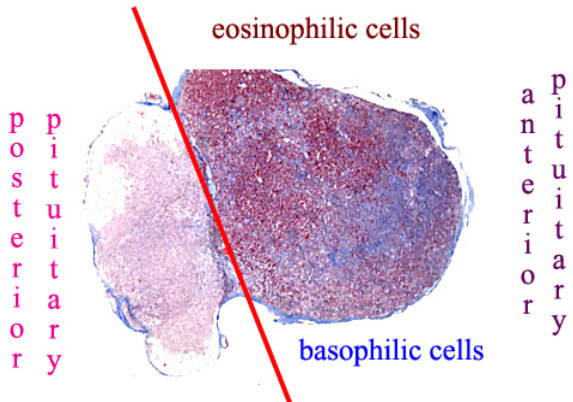
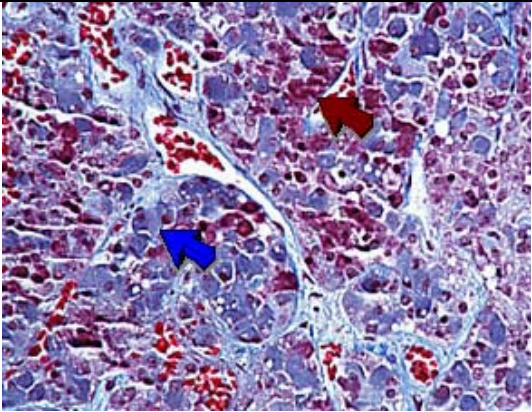
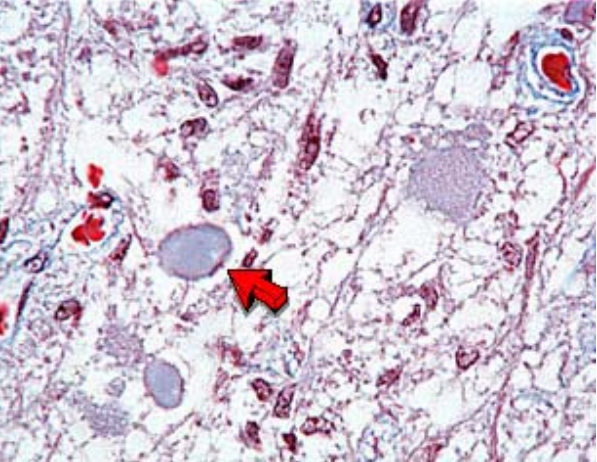
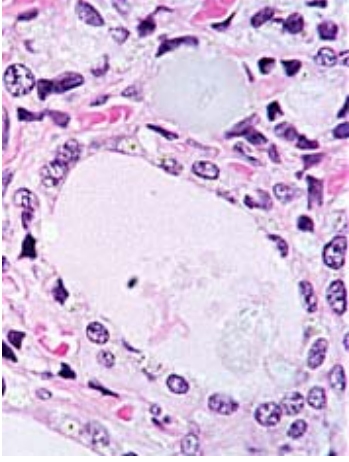
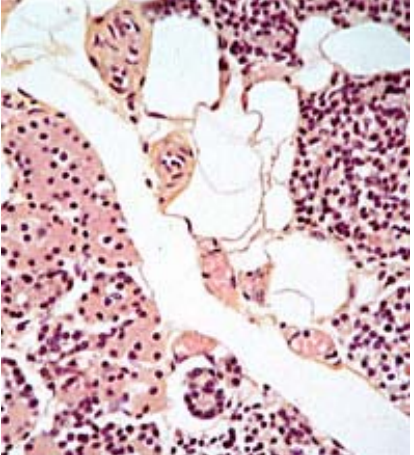
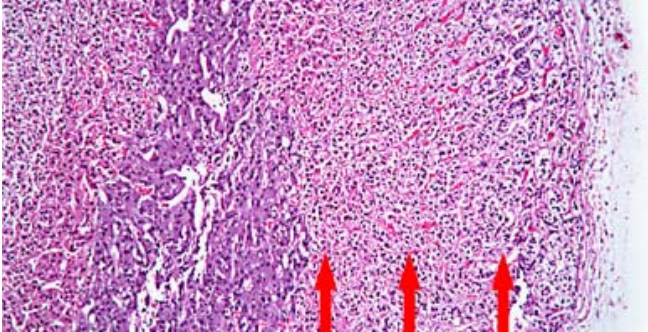
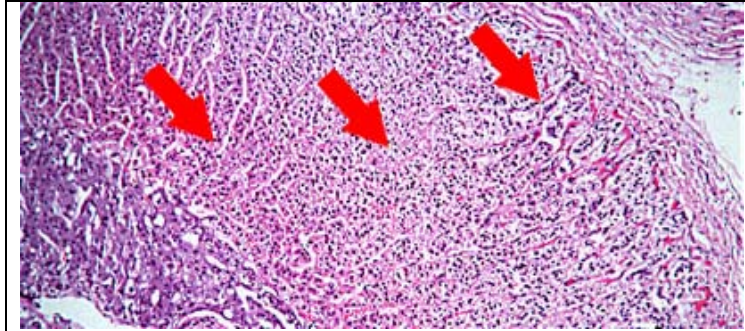


The Endocrine System

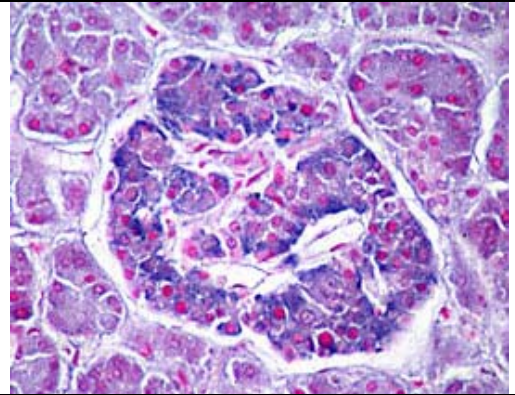
As this system is well covered between online lectures and traditional lectures, I am not going to repeat what you've been learning. Hence, we'll cut right to the chase.

In the table, below, are representative micrographs of various endocrine tissues:

 <p style="text-align: center;">Pituitary gland</p>	 <p style="text-align: center;">Anterior pituitary</p>
 <p style="text-align: center;">Posterior pituitary</p>	 <p style="text-align: center;">Thyroid gland</p>
 <p style="text-align: center;">Parathyroid glands</p>	 <p style="text-align: center;">Adrenal #1</p>



Adrenal #2



Pancreas (Islet)

Experimental – Materials

Computer with internet connection (in cadaver lab)	This experiment	Colored pencils
This link: http://www.kumc.edu/instruction/medicine/anatomy/histoweb/endo/endo.htm		

Experimental – Methods

In the spaces, below, draw your version from the link, above, of the following tissue micrographs:

Pituitary gland	Anterior pituitary	Posterior pituitary
Thyroid gland	Parathyroid glands	Adrenal glands

Pancreas (Islet)		Pineal gland

When the whole class has completed this exercise, meet, again, in the classroom to view the endocrinopathy video.